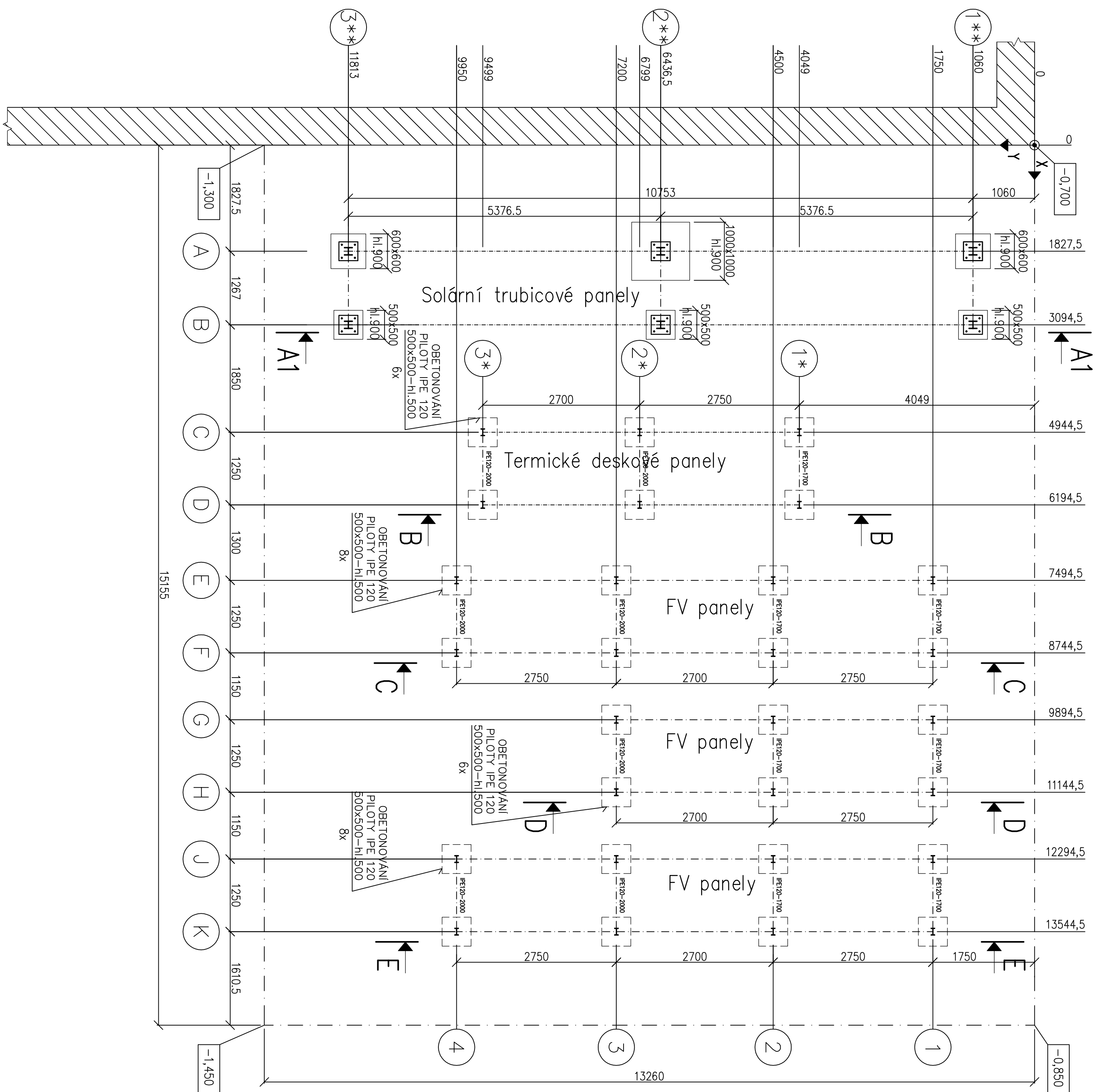
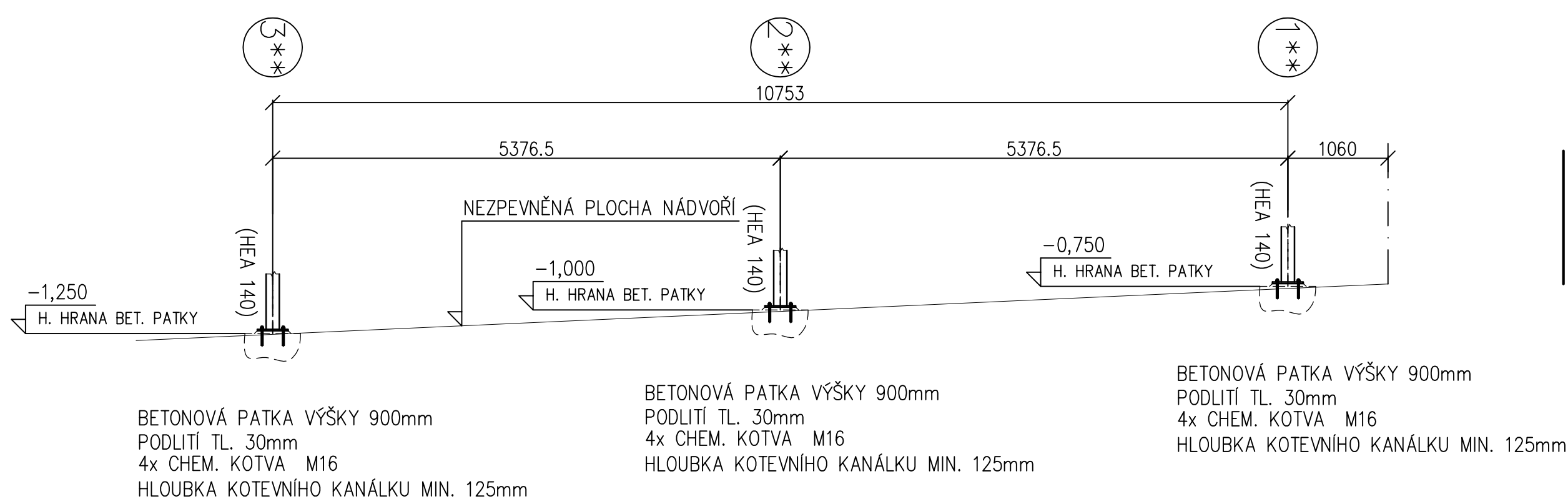
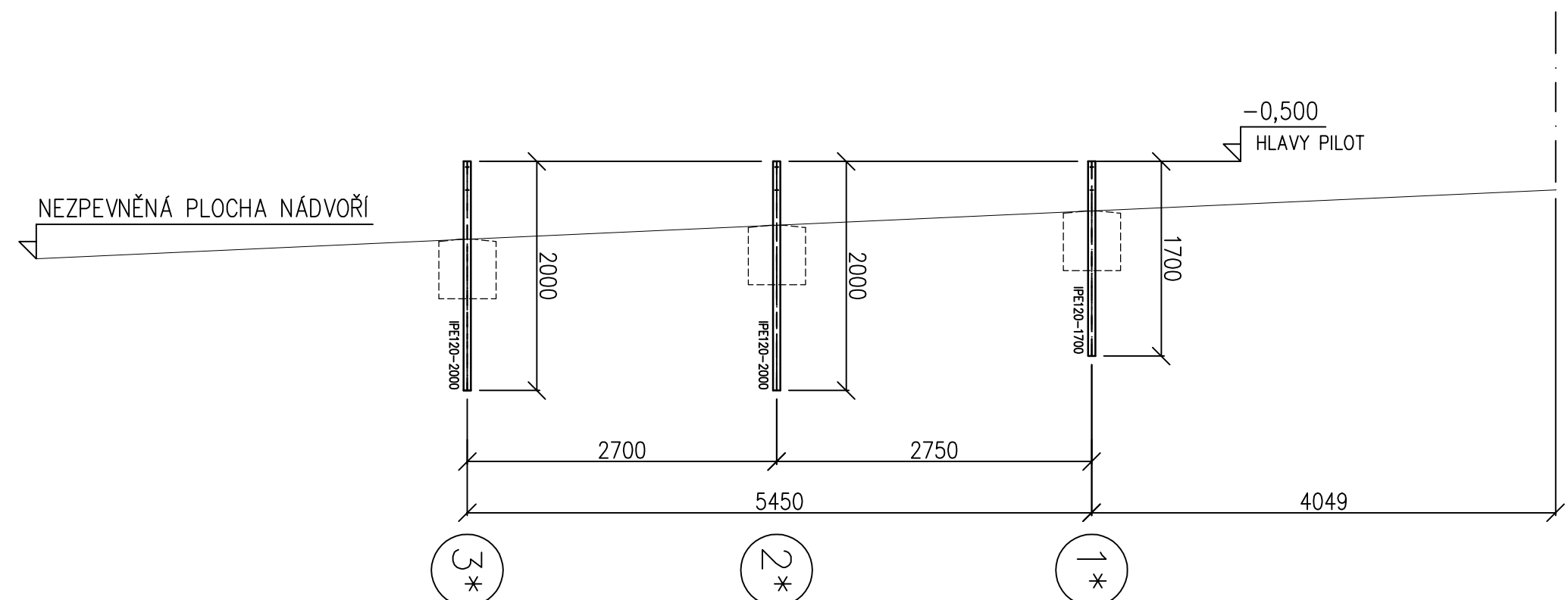
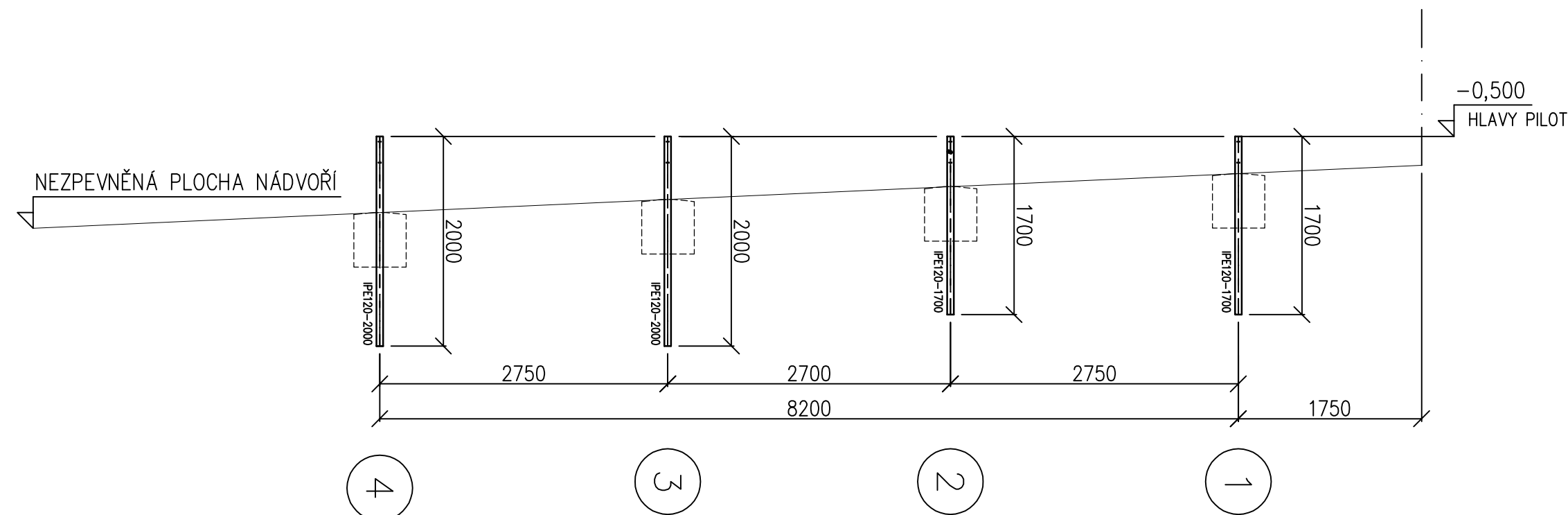
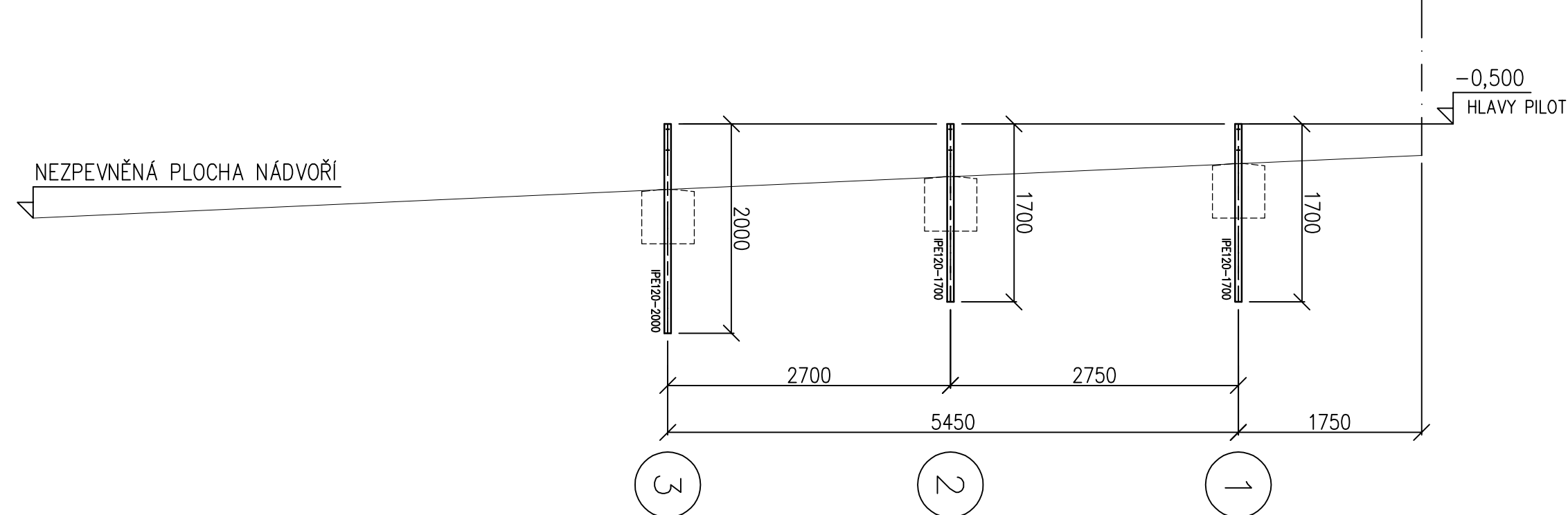
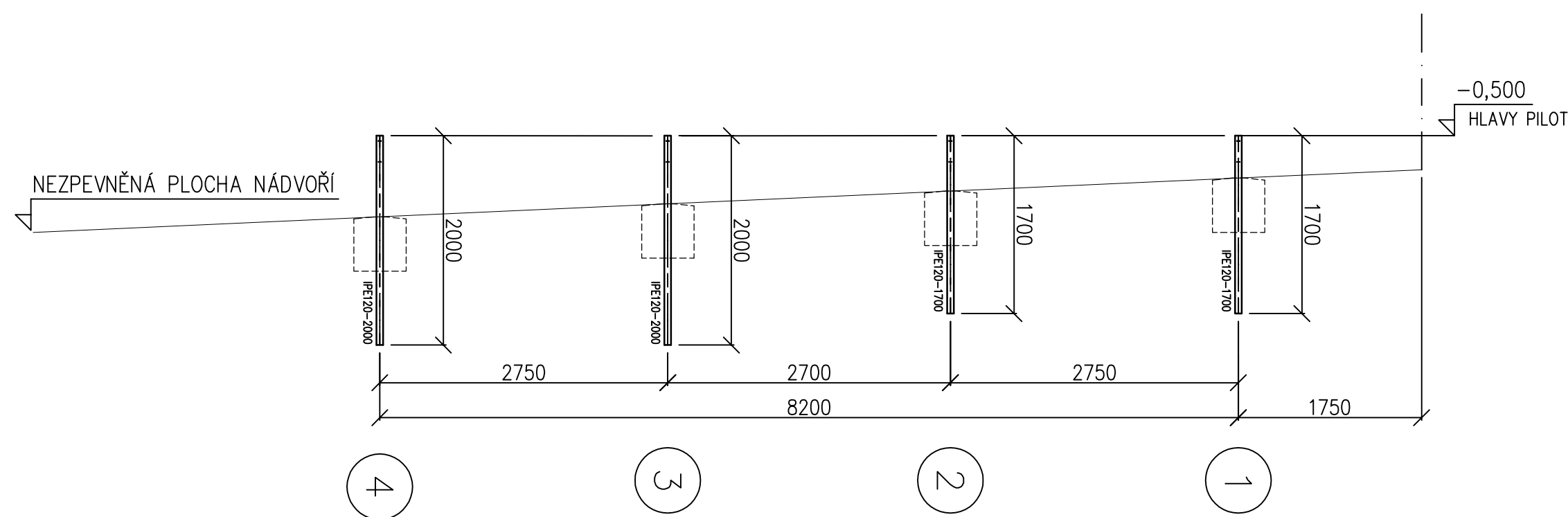
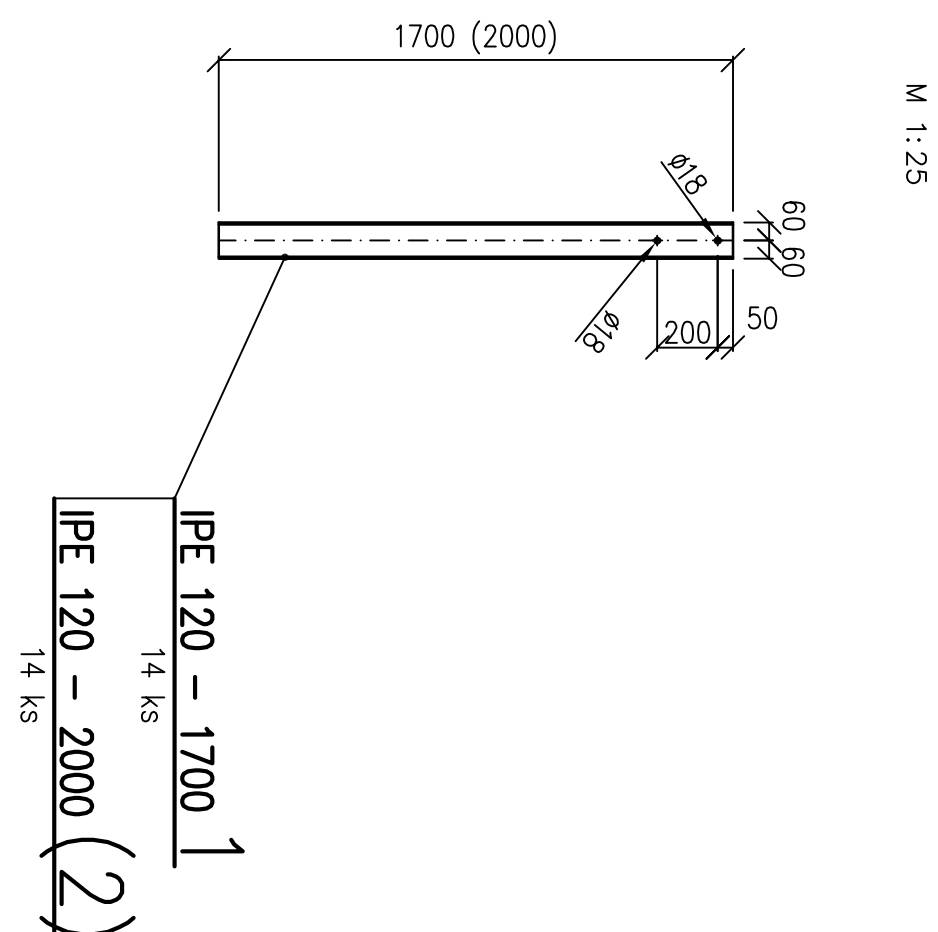


KOTEVNÍ PLÁN


$$\underline{A1 - A1}$$

$$\left| \begin{array}{c} B \\ - \\ B \end{array} \right|$$

$$\overline{C - C}$$

$$\overline{D - D}$$

$$\frac{E}{E}$$


DETAIL PILOTY IPE 120



| VÝPIS MATERIÁLU | | | | | |
|-----------------|------------------------|----------|-------------|----------|----------|
| POZ. K/S | POZICE – označení [mm] | VÁHA/KUS | VÁHA CELKEM | MATERIAL | POZNÁMKA |
| 1 | 28 HPE 120 – 1700 | 17,7 | 495,6 | 5235,601 | POZ.NIK. |
| | Průtoka 5% | | 24,4 | | |
| | CELKOVÁ VÁHA [kg] | | 520 | | |

BETON PATEK: C25/30 (2,3 m³)
24x CHEMICKÁ KOTVA M6 (HLOUBKA KOTVENÍHO KANÁLKU MIN. 125mm)
28x PÍLOTY IPE 120 (HLOUBKA ZAPUŠTĚNÍ POD ÚROVEŇ TERÉNU NADVORÍ 1350mm)

[illegible]